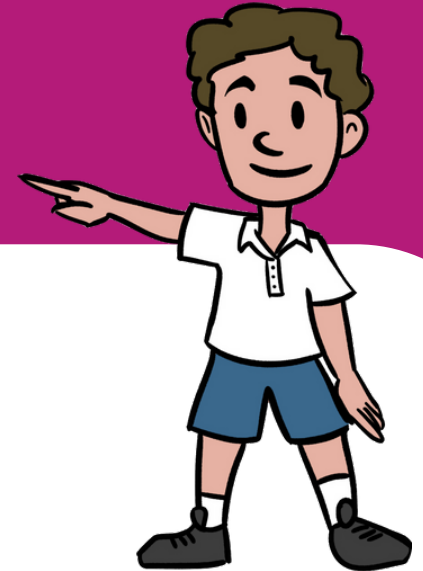


Alphabet Walk



Get Set 4
Education

Play: Outside



How to play:

- Head out for a walk.
- On the way, try to spot something beginning with the letter 'A', the Z the letter 'B' and so on until you get to 'Z'.
- Make this easier if there are some letters that are difficult to find by finding something that contains the letter instead of 'starts with the letter...'